

Intent

Aims: We aim for everyone in our community to engender and value a love of learning. It is our aim that everyone within our school community aspires to our vision. For our pupils we are aiming for them to develop and enhance the necessary skills, both social and academic to become prepared for the ever-changing world ahead of them. We have a desire that all stakeholders take with them happy memories of their time in school, feeling that they have been valued. We aim for all members of the community to show mutual respect and courtesy, in an environment that is a safe and happy place to learn where all pupils achieve their potential.

Ethos : Our ethos is based on inclusivity. Everyone in our school community is cared for and valued equally as a unique person. In our learning, in our work, in our relationships we are committed to aiming for success.

Teaching intentions: Evidence informed practice, high standards, inclusive culture, purposeful learning, reflective feedback, healthy minds and bodies, learning environment

Learning skills (BLP): manage distractions, notice attentively, persevere, become absorbed, make links, imagine, capitalise, reason, collaborate, empathise and listen, imitate, develop interdependence, take a questioning approach, plan, revise, distil, meta learning

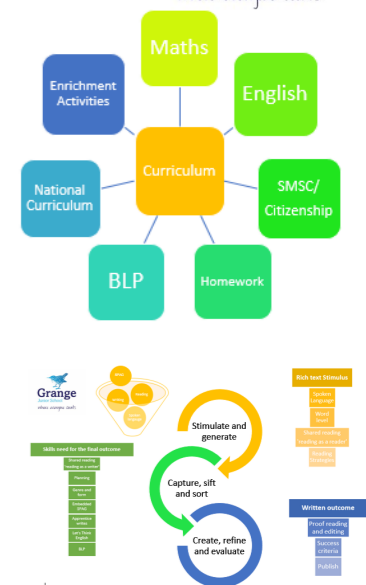
British Values

- Rule of law
- Democracy
- Tolerance
- Mutual respect

Individual Liberty

Cultural Capital
Local & Global citizenship

SMSC



Implementation

The curriculum is implemented in such a way that purposeful learning opportunities are created for each and every child. We take into account the diversity of our children to carefully plan lessons which meet individual needs, ensuring equity and inclusion for all. At Grange Junior School, distributive leadership is embedded, ensuring subjects are planned carefully securing both continuity and progression of skills and knowledge. Learning units are taught using a range of techniques to enable each individual to learn at an appropriate pace.

- English
- Maths
- Science
- Art
- Computing
- DT
- French
- Geography
- History
- Music
- PE
- PSHE
- RE
- LTE

Clubs : Art, Athletics, Basketball, Board Games, Cheerleading, Choir, Dance, Dodgeball, Football, Science, Shine Jesus Shine, Yoga

Our Assembly varies in approach and content and provides a fantastic opportunity to build a strong sense of community. They reinforce our school's ethos, values and relevance of Teaching intentions, Learning Skills and British Values. They are planned to develop the children's identity at Grange Juniors and all staff are involved in assemblies during the year.

Reading is integrated into all curriculum areas in the school. Children read to be informed and entertained across a range of subject areas — we have a curriculum map to ensure a range of rich texts are covered.

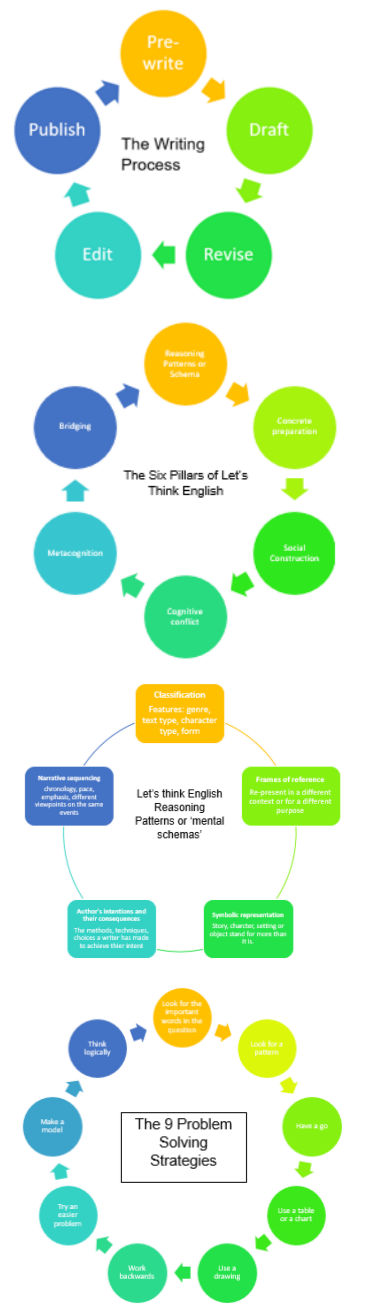
Pupil Voice : School Council, learning council, House captains, Librarians, Daily Mile monitors, Play-makers, Fruity Friday monitors.

Enrichment activities: Harvest Festival, Remembrance Assembly, Sports Day, World Book day Author visit, Trip to Southampton, visit to local Flight Museum , Year 6 Residential Visit, Iron Age experience, Trip to Wisley Gardens , Winchester Science Museum, Local Area Walk, Monthly Societies , RE Visitors, Theme weeks, Shrove Tuesday

Needs of Pupils: *ASD *MLD *ADHD *SEMH *Dyslexia * Physical Disability

Interventions: *ELSA *OT *Precision Teaching *1st class @ number *catch up *therapeutic story writing *Nurture *Arts therapist *reflexologist *FEIPS *Phonographix * dancing bears *paired reading *social group *success @ arithmetic

Outside Agencies: *Bikeability *PBS *EP *School Nurse *LA *Social Services *SALT * CAL * FSW * Police *Early Help Hub



Impact

Standards - ALL children make expected or better than expected progress and attainment and have targets matching their individual needs. Formative and summative assessment and data is frequently analysed to inform next steps in learning.

Wellbeing - children enjoy learning and coming to school. Their mental health and wellbeing are taken into account on a daily basis and any concerns Staff have are acted upon quickly and effectively. Children are confident, independent and successful learners.

Personal Development - children demonstrate our Learning Powers through their attitude to learning and behaviour in and around school. They master essential skills and knowledge whilst developing effective foundations for learning which will see them prepared for further schooling and the challenges life brings

- Internal data—pupil progress
- External Data (SAT's)
- Learning Walks
- Lesson Observations
- Pupil Conferencing
- Self Assessment
- Book Look
- Survey Responses
- ELSA outcomes
- Parent View